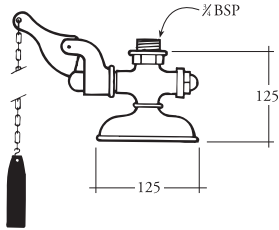


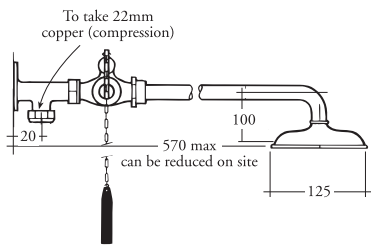


**Shower Valves**

**NC4001 Shower Valve**



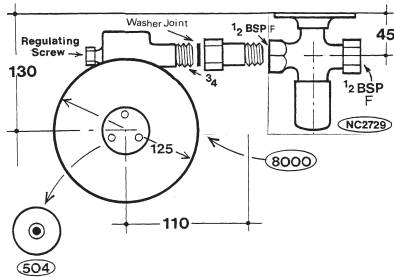
**NC4002 Shower Valve**



**Eye Wash & Drinking Fountains  
(Non Concussive Self Closing)**

**NC501 Drinking Fountain Valve**

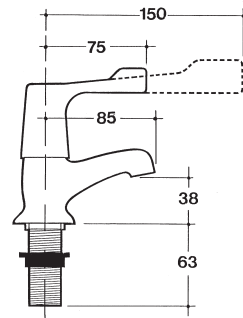
**NC8000 Eye Wash Fountain**



**Hospital Water Fittings, Lever Action  
Taps & Mixers, Ceramic Disk Action**

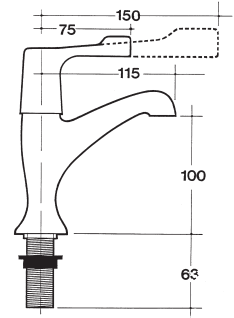
**HFC103 1/2" Basin Pillar 3"  
Lever Control**

**HEC103 1/2" Basin Pillar 6"  
Lever Control**



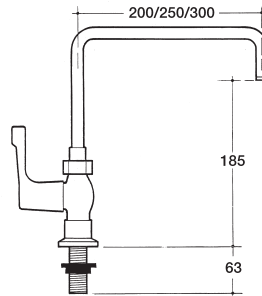
**HFC106 1/2" Sink Pillar 3"  
Lever Control**

**HEC106 1/2" Sink Pillar 6"  
Lever Control**



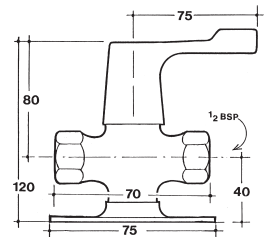
**HFC7146 1/2" Swivel Pillar  
3" Lever Control**

**HEC7146 1/2" Swivel Pillar  
6" Lever Control**



**HFC1042 1/2" Wall Mounted  
Stopcock 3" Lever Control**

**HEC1042 1/2" Wall Mounted  
Stopcock 6" Lever Control**



**HFC1010 1/2" Sink Pillar  
Mixer 3" Lever Control**

**HEC1010 1/2" Sink Pillar  
Mixer 6" Lever Control**

**HFC2010 1/2" Sink Wall  
Mixer 3" Lever Control**

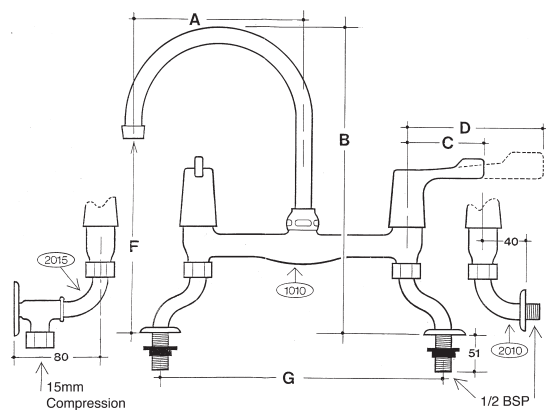
**HEC2010 1/2" Sink Wall  
Mixer 6" Lever Control**

**HFC2015 1/2" Sink Wall  
Mixer 3" Lever Control**

**For Exposed Supplies  
15mm compression**

**HEC2015 1/2" Sink Wall  
Mixer 6" Lever Control**

**For Exposed Supplies  
15mm compression**



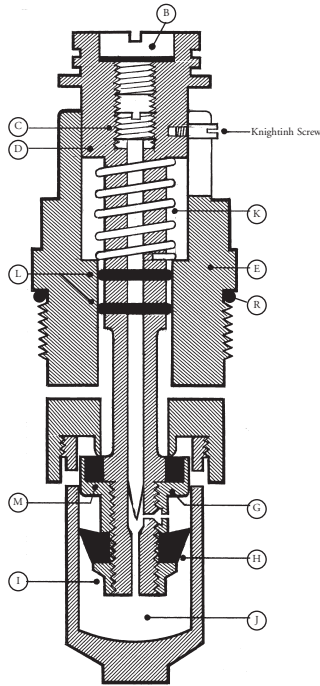
Fitting	mm			
A 1010/2010	200	150	100	
B 1010/2010	400	370	350	
C 1010/2010	75	75	75	
D 1010/2010	150	150	150	
F 1010/2010	270	270	235	
G 1010	165	165	165 min	
	245	245	245 min	
G 2010	200	200	200	
G 2015	200	200	200	

# Non-Concussive Fittings (Self Closing)

Dimensions in millimeters



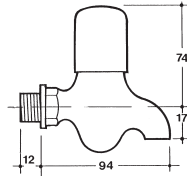
## Adjustable Headworks



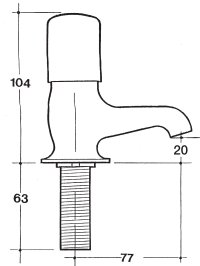
- B Sealing Screws
- C Adjustable Needle
- D Main Spindle
- E Cover
- R 'O' Ring Seal
- G Seating
- H Cup Washer (Rubber)
- I Washer Lock Nut
- J Chamber
- K Spring
- L 2 'O' Rings
- M Seating Washer

The Barwil Non-concussive valve is adjustable under varying pressures whilst it is fixed and in use. Remove the easy-clean shield (A) which is grub screwed to the main body. This will expose the sealing screw (B) which, when removed, allows access to the adjusting needle (C). This is slotted to take a small screwdriver and by turning the spindle down for high pressure and up for low pressure, the valve can be regulated perfectly. This mechanism is used in non-concussive valves numbered: 2722, 2724, 2726, 2727, 2728, 2729, 2750, 2754, 2780.

### NC2724 Bibcock

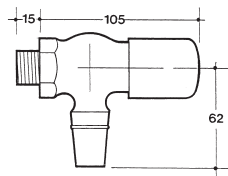


### NC2720 Pillar Valve

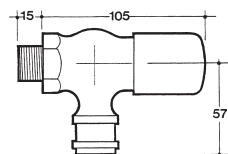


## Horizontal Bibcocks

### NC2726 Bibcock

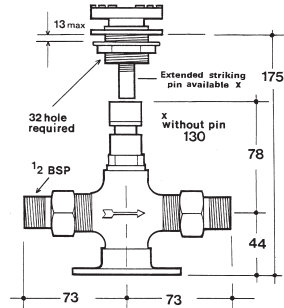


### NC2726 Bibcock

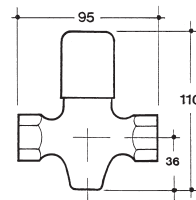


## Adjustable Stopcocks

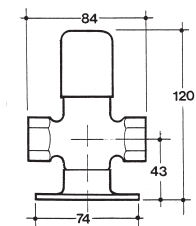
### NC2727 Foot Operated Stopcock



### NC2728 Stopcock

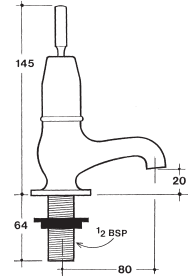


### NC2729 Stopcock

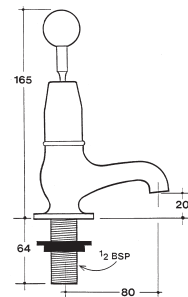


## Adjustable Valves

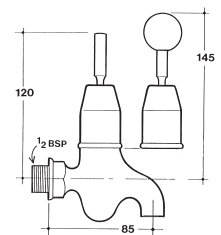
### NC2750 Pillar Valve



### NC2750B Pillar Valve



### NC2754 Bibcock



## Current WRC Listings

Model No.	Certificate No.	I.R.N. No.	Water Byelaw
2720	0607051	109	16 & 18
2722	0607053	109	16 & 18
2724	0607052	109	16 & 18
2726	0607052	109	16 & 18
2727	0607054	109	16 & 18
2728	0607054	109	16 & 18
2729	0607054	109	16 & 18
2750	0607051	001	N/A
2780	0607053	001 & 109	16 & 18
HEC/HFC 1010	0202028*	000	N/A
HEC/HFC 2010	0202028*	000	N/A
HEC/HFC 2015	0202028*	000	N/A

\*new listing applied for.

